

Dales

Area Committee Executive Summary

September 2012

Introduction

- The Dales Ward has a diverse community 75% white and 10% Pakistani. In previous census with figures due for the 2011 Census due which will show an increase in East European African and Roma immigrants.
- The index of deprivation 2010 highlights five out of nine areas of the ward in the worst 10% for Crime and disorder. However by February 2011 this had changed and levels of crime across the Ward had fallen from 80 crimes per month to single figures. Lifting the ward out of the worst 10%.
- The 2010 figures for health deprivation and disability were in the worst 10% in 4 of 9 areas.
- Income deprivation affecting children and older people were in the worst 10% in 4 of 9 areas.
- The high levels of private rented accommodation have attracted people from over fifty five countries mainly to the Sneinton area.
- There are seven Community Centres with lots of community sports dance and social groups meeting in them.

Ward Priorities

THEME	PRIORITY	KEY ACTIONS
SAFER	<ul style="list-style-type: none"> To reduce antisocial behaviour targeting most prolific offenders. Tackle, drug taking and dealing particularly on parks and open spaces Reduce repeat reporting of domestic violence. 	<ul style="list-style-type: none"> Coordinate work of Neighbourhood Services Community Protection Police at monthly NAT which is planning a Week of Action in October. Recruiting to Neighbourhood Alert. Domestic Violence Forum providing training and information packs for officers. NDVF running sessions on DV awareness at local schools.
NEIGHBOURHOODS	<ul style="list-style-type: none"> To tackle levels of fly tipping and bins on streets- reduction of dog fouling, Improving local parks. Ensure the views of local people assist in setting priorities Support work of Community Associations and groups 	<ul style="list-style-type: none"> Monitor progress of actions at monthly NAT meeting. Week of action being planned dog fouling at hot spots Neighbourhood Services and CPO's targeting streets Consultation re equipment at Colwick Woods and Parkdale Parks WREN bids were successful. 10 Local Issues Meeting and Councillor Ward Walks
FAMILIES	<ul style="list-style-type: none"> Assistance to families in Stress Support for integration of East European African and Roma families 	<ul style="list-style-type: none"> Family Community Teams/Epic and partners have an activity Timetable for Summer and other holidays. City/ Renewal Trust Partnership Worker coordinating work with Roma families.
HEALTH	<ul style="list-style-type: none"> Improve well being on the community. Tackle high levels of coronary heart disease and diabetes. Provide health promotion advice. 	<ul style="list-style-type: none"> Health Promotion Team support health groups and activities for Heart Health, Cancer and Lifestyle risks alcohol, smoking healthy eating , physical activity, mental health).
WORKING	<ul style="list-style-type: none"> More Jobs, Training and volunteering opportunities 	<ul style="list-style-type: none"> The Renewal Trust Childcare Voucher Scheme: Carlton Road Job Shop –Enterprise Coaching Service provides advice to local start up businesses community businesses. Support migrant workers

Community Engagement

Ward Walks

Area/Estate	Date/Time	Meeting Point
Parkdale/Bakerdale Rd	Wednesday 12 th September 5pm-6.30pm	Parkdale Rd corner
Skipton Circus	Wednesday 7 th November 9.30-11am	Skipton Circus/Sneinton Dale

Community Meetings

Group	Date	Venue
Heritage day Hermitage Caves-Sneinton Alchemy	Sunday 9 th September 2-4pm	Sneinton Hermitage
Local Issues meeting South Sneinton	Monday 17 th September 7-9pm	Muslim Community Organisation Centre
Sneinton Tenants and Residents Association	Tuesday 25 th September 7-8.30pm	St Christopher's Church
Local Issues Meeting	Tuesday 16 th October 6.30-8pm	St Cyprians Church
Councillors Cafe	Wednesday 17 th October 8.30-10am	Sure Start 144 Sneinton Dale
Local Issues Meeting	Thursday 18 th October 6.30-8.30pm	Greenway Centre
Local Issues Meeting	Monday 12 th November 6.30-8pm	United Reform Church

Community Engagement

Events Delivered

Event	Lead Partners	Date/Time	Venue
Week of Action – A series of events/actions around Environmental issues	NOMS Police Community Protection Recycling Officer Family and Community team	W/C 15th October- 19 th October	Various street locations

Future Events and Activities Planned

Event	Lead Partners	Date/Time	Venue
NCC Budget 2013-14 Consultation	Councillors Locality Management	5 th December 6-7.30pm	St Christopher's Church hall
Christmas tree and Lights Switch on	Councillors Locality Management	Friday 14 th December 12noon and 4pm	Sneinton Police Station forecourt
Young peoples activities	Locality Management Renewal Trust	September	Community Centre

Finance

Ward Councillor Budgets

Total Amount allocated this period £5,,570

Budget Remaining Unallocated £9,593 (inc of 2012-13 allocation)

Area Capital Fund

Total Amount allocated this period £ None

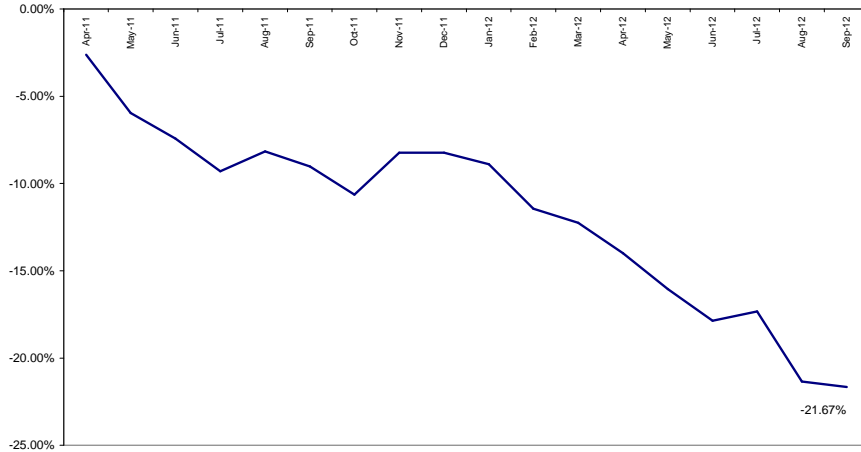
Budget Remaining Unallocated £29,186 (inc of 2012-13 allocation)

Others – Section 106, NCH Environmentals, Other Funding

None this period

Crime

All Crime in Dales -
% Change over 2010/11 Baseline (Rolling 12 Month)



Red		
Amber		
Green*	5 fewer crimes	-4.85%

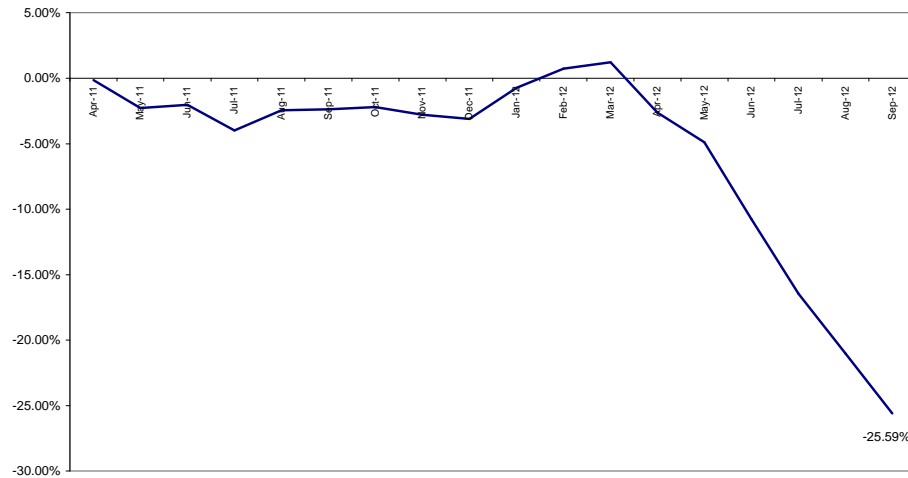
*Refers to September 2012 compared to September 2011

- All Crime in Dales is down compared to September 2011. In addition, Year to Date figures indicate that All Crime is down by 20% compared to the previous year.
- The above Baseline graph indicates that All Crime in Dales has decreased by 22%. The graph also emphasises the general decline in All Crime, indicating that figures for this month are in line with those observed in previous months.
- The Rate of All Crime per 1000 of the population for Dales falls below the City average.

Ward Contact: Mark Stanley

All ASB

All ASB in Dales -
% Change over 2010/11 Baseline (Rolling 12 Month)



Red		
Amber		
Green*	56 fewer calls	-57.73%

*Refers to September 2012 compared to September 2011

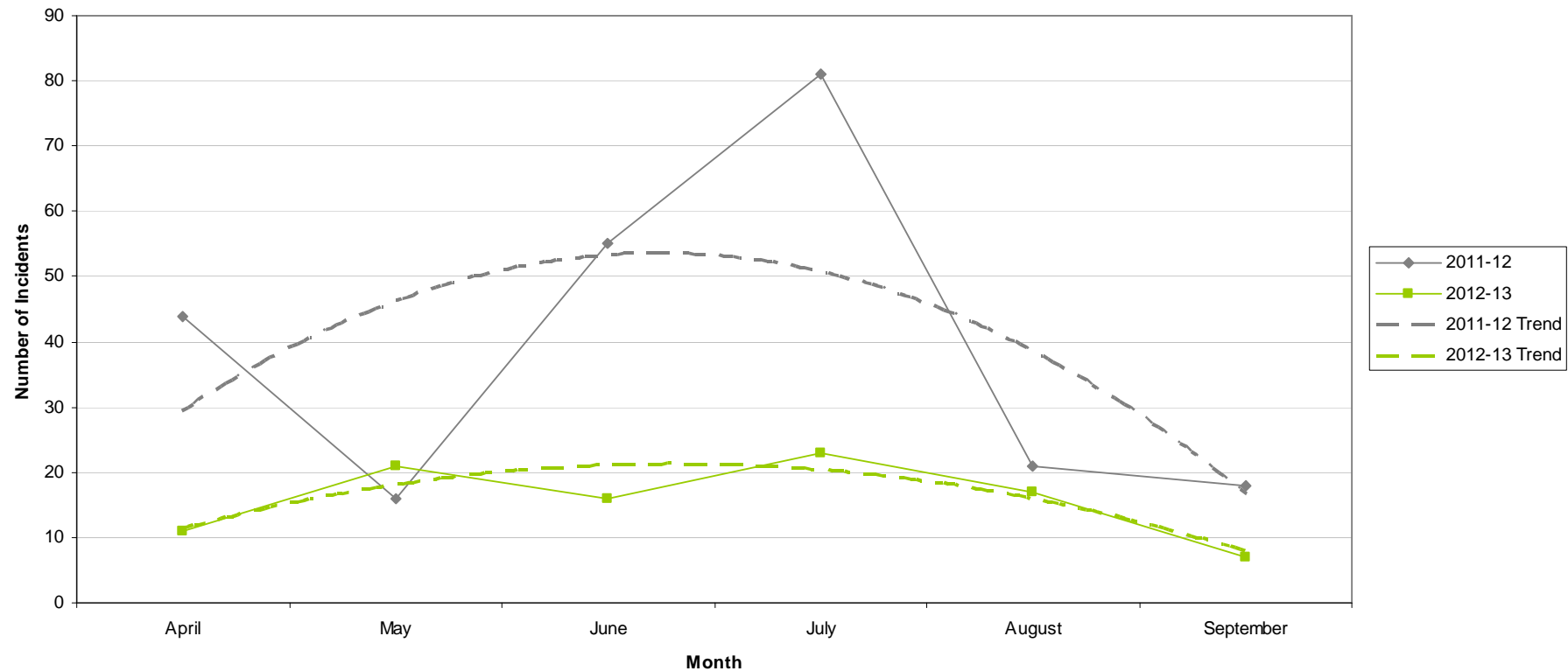
- In September 2012 Dales had **less than half** the ASB calls it had in September 2011.
- By Year to Date, Dales has experienced another **reduction of nearly half (-45%)**. The Year to Date performance of the Division as a whole was at -31% at the end of September 2012.
- Over a 2010/11 Baseline Dales is showing a reduction of -26%. The graph also highlights the steady decline in ASB calls over the past 6 months.
- Of all ASB calls received for Dales in September 2012 the majority (66%) were categorised as **'Nuisance'**. This is consistent with the Division as a whole. Of the remaining calls 27% were classed as **'Environmental'** and 7% were classed as **'Personal'**.

Graffiti Reports

RED		
AMBER		
GREEN	11 fewer reports	-61%

- All data refers to a comparison with the previous year's month
- It is proposed that performance over time graphs be used for each indicator
- Historic data for comparison is not available for dog fouling

Incidents of Graffiti

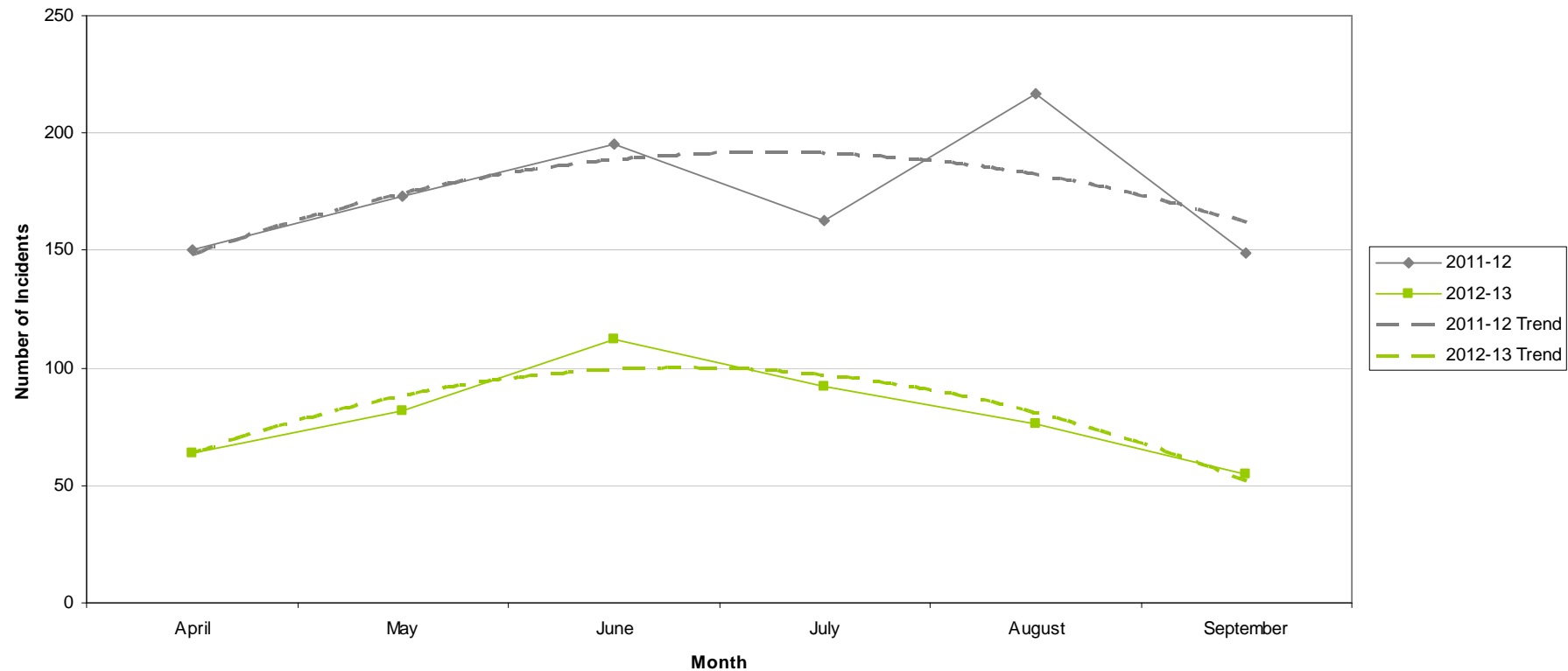


Fly Tipping

RED		
AMBER		
GREEN	94 fewer reports	-63%

- All data refers to a comparison with the previous year's month
- It is proposed that performance over time graphs be used for each indicator
- Historic data for comparison is not available for dog fouling

Incidents of Fly Tipping

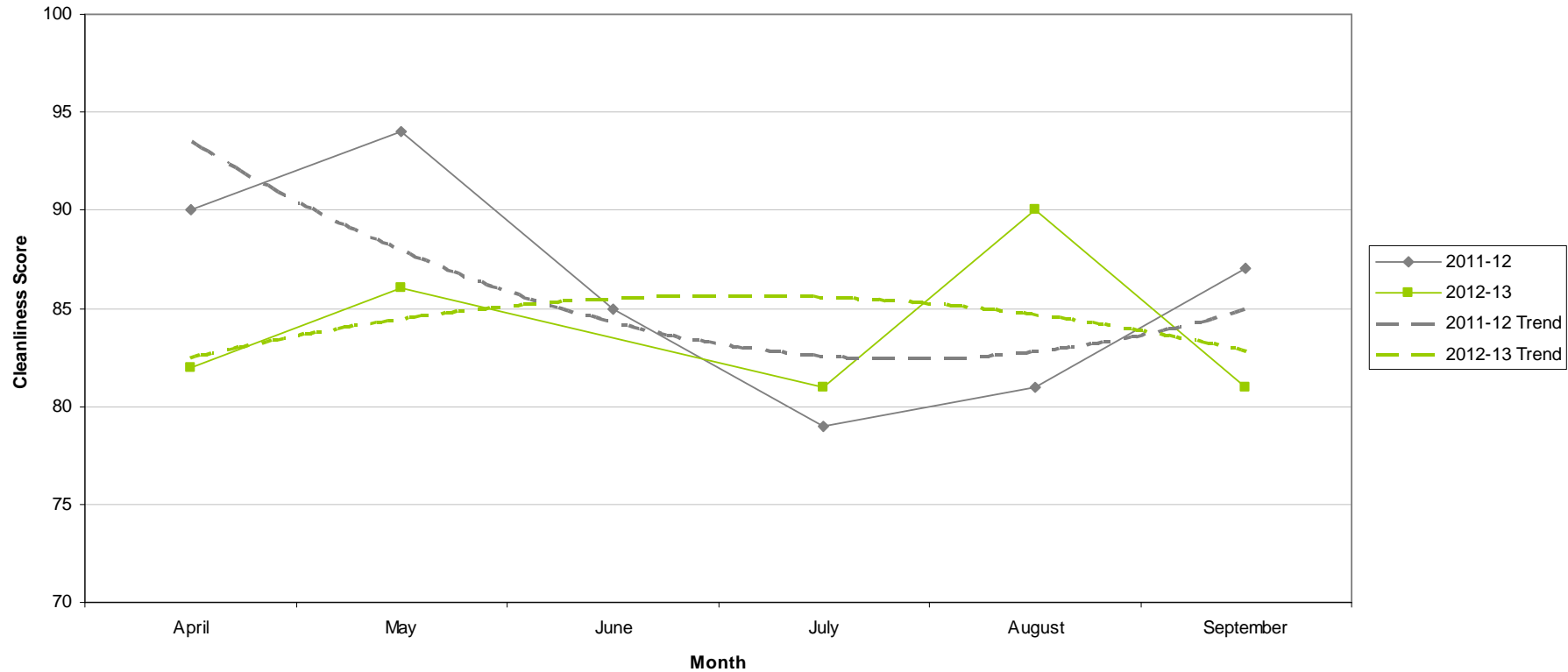


Cleanliness Index

RED	81	6 point decrease
AMBER		
GREEN		

- All data refers to a comparison with the previous year's month
- It is proposed that performance over time graphs be used for each indicator
- Historic data for comparison is not available for dog fouling

Cleanliness Index



Unemployment Rate

Ward	Aug-12			Change in last month		Change in last year	
	Number	Rate	City Rank	Number	%	Number	%
Arboretum	830	7	9	12	1.5	86	11.6
Aspley	1,197	10.6	1	15	1.3	57	5
Basford	730	6.6	11	21	3	25	3.5
Berridge	1,090	7.5	6	17	1.6	115	11.8
Bestwood	989	8.7	4	-26	-2.6	-19	-1.9
Bilborough	762	7.3	7	-36	-4.5	6	0.8
Bridge	756	7.2	8	6	0.8	15	2
Bulwell	1,045	9.6	2	-4	-0.4	32	3.2
Bulwell Forest	444	4.9	15	-12	-2.6	-5	-1.1
Clifton North	381	4.3	16	-14	-3.5	27	7.6
Clifton South	506	5.8	12	12	2.4	-11	-2.1
Dales	883	7.6	5	-10	-1.1	8	0.9
Dunkirk and Lenton	262	2.4	19	-5	-1.9	-27	-9.3
Leen Valley	351	5	14	13	3.8	26	8
Mapperley	750	6.7	10	31	4.3	8	1.1
Radford and Park	776	4.1	17	-19	-2.4	36	4.9
Sherwood	552	5.1	13	-19	-3.3	-71	-11.4
St Ann's	1,242	9	3	13	1.1	29	2.4
Wollaton East and Lenton Abbey	144	1.5	20	9	6.7	4	2.9
Wollaton West	262	2.8	18	29	12.4	25	10.5

Source: ONS claimant count August 2012 (from Nomis)

This is an edited version of a report produced by: Geoff Oxendale, Information and Research Officer, Nottingham City Council

Housing



Dales Ward

Empty properties - Dales Ward

Indicator	Current Target	2010/11	2011/12	2012/13		
		Value	Value	Value	Status	Trend
Average void re-let time for Dales Ward	26	26.12	17.5	35.11		
Lettable voids Dales Ward		7	12	6		
Empty properties awaiting decommission in Dales Ward		8	2	1		

Estate star ratings (from Tenant Service Inspectors)

Indicator	2010/11		2011/12		2012/13		
	Value	Status	Value	Status	Value	Status	Trend
Estate star rating - Sneinton	2 Star		3 Star		3 Star		
Estate star rating - Colwick	2 Star		3 Star		3 Star		
Estate star rating - Cardale	2 Star		3 Star		3 Star		
Estate star rating - Bakersfield	3 Star		3 Star		3 Star		

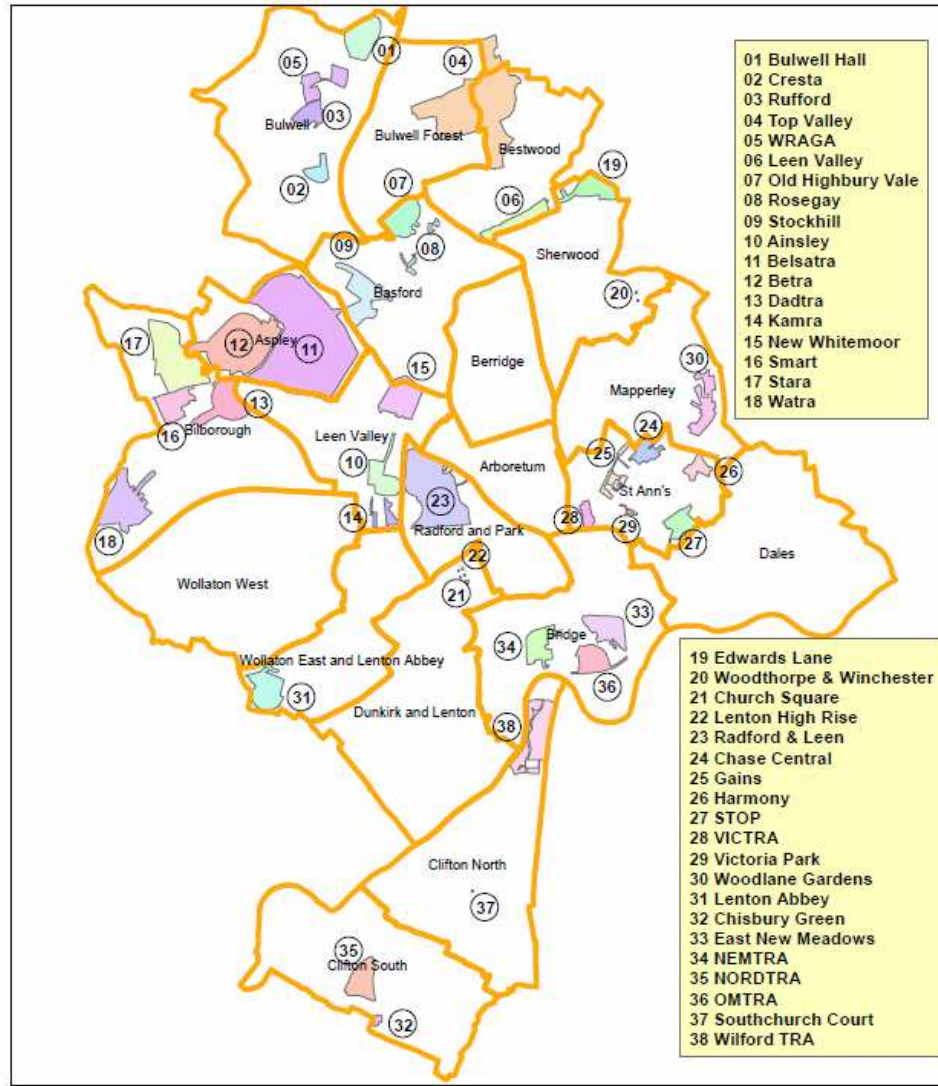
Rent Collection - St Anns

Indicator	Current Target	2010/11	2011/12	2012/13		
		Value	Value	Value	Status	Trend
Rent charged that has been collected - St anns office area	100%	100.3%	101.4%	99.9%		

Data prepared by Nottingham City Homes Performance Team

For more information please contact Tricia Quinn, Performance Review Manager on 0115 9157365 or Marcus Parton, Performance Review Officer 0115.915715

Housing



Map of Tennant and Resident Associations by Ward

Community Protection

In Dales in the last month there were the following court outcomes:

- Antisocial Behaviour Order for Harassment;
- Two Outright Possession Orders (Evictions): one was for Antisocial behaviour and the other was for Noise; and
- Two Cautions.

Data has been received from Community Protection and where postcodes have been listed these have been geo-coded and mapped to determine the Ward. All addresses relate to the address of the Perpetrator.

FPNs are not currently available at Ward level.

Methodology

Crime Data and ASB calls have been extracted from the Police systems and mapped to ascertain which Ward they occurred in.

Due to the dates of the meetings, data for all Wards was extracted at the same time at the start of the month - and as such is not officially 'validated' data.

Where possible the most recent data is used, although for some areas this may be a month further in arrears.

Discussions continue with other agencies regarding what further data can be included.